

Design For Place

energy-efficient design at your fingertips



Sustainable, energy-efficient house plans—free to download.

Design For Place includes architect-designed floor plans and elevations for a single-storey house, adapted for three block sizes.

Specifications and construction techniques are provided for Australia's major climate zones to achieve a minimum 7-star energy rating.

Commissioned by the Australian Government, the designs are a significant resource for anyone planning a new home.

To find out more and download the plans, go to www.yourhome.gov.au/house-designs.



Design For Place

area

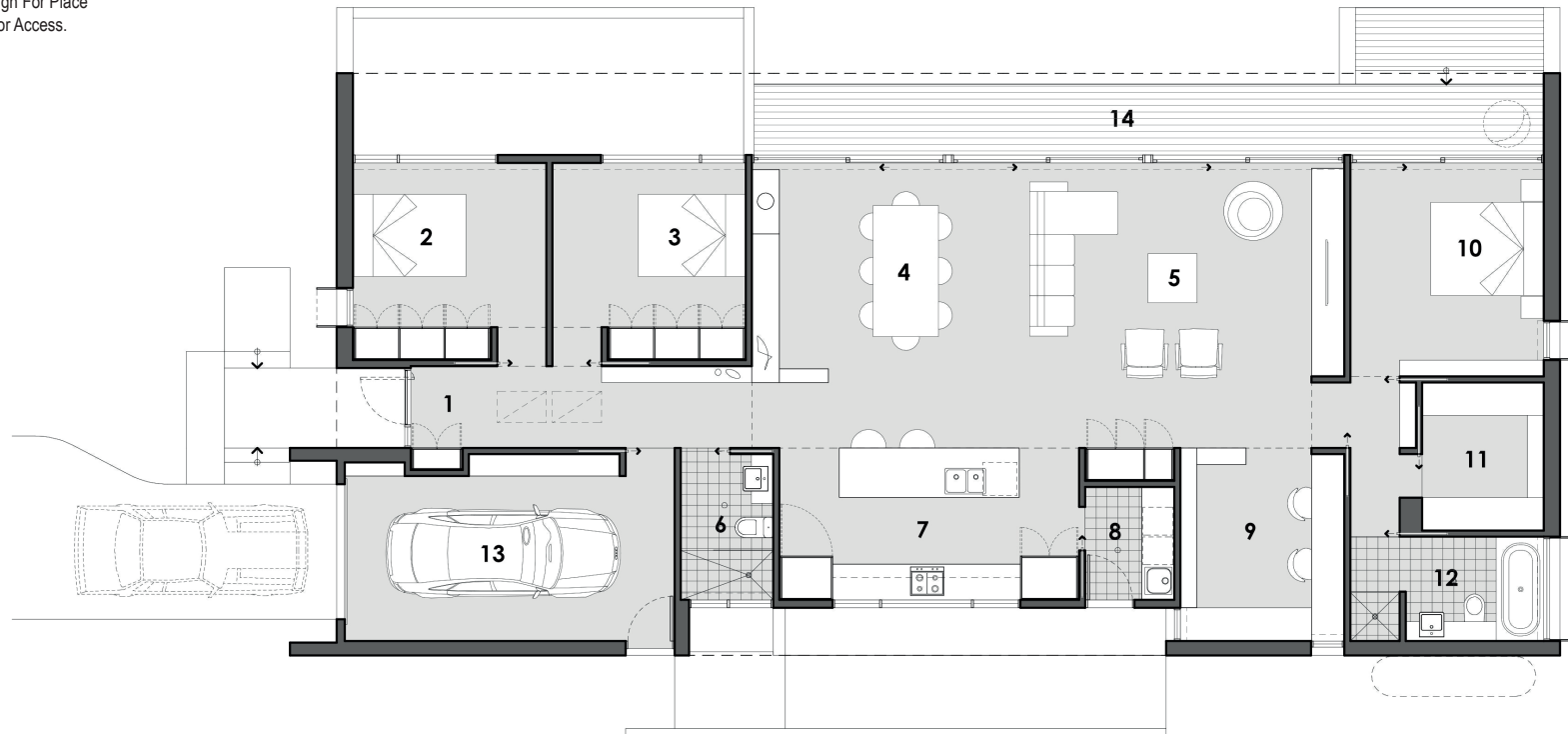
ground floor living 172 m²
garage 22 m²

total 194 m²

note: GFA calculations do not include
decks, verandahs, carports, nib walls

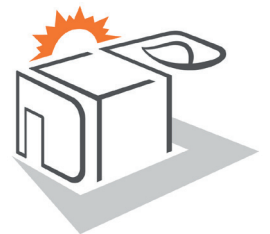
These plans will need modifying to comply
with local legal and project requirements.

For details see the Design For Place
Terms and Conditions for Access.



- 1 entry
- 2 bedroom 2
- 3 bedroom 3
- 4 dining
- 5 living
- 6 bathroom
- 7 kitchen
- 8 laundry
- 9 study
- 10 bedroom 1
- 11 robe
- 12 ensuite
- 13 garage
- 14 deck

option 1a - type 1 floor plan



Design For Place