

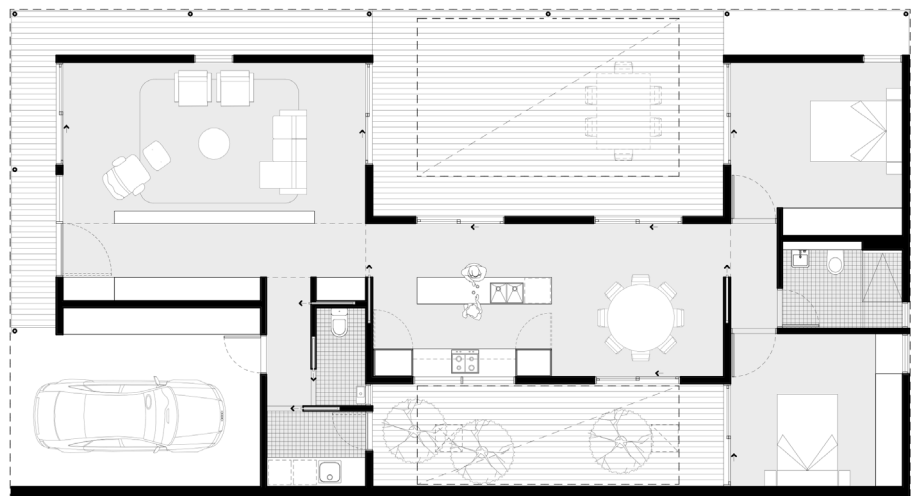
Case Study 1

Design For Place* Acacia house in Adelaide


Project details:

2 bedroom, 2 bathroom home, located in Adelaide.

123m² floor area (excluding carport).



Construction details:

Floor plan 

Floor 100mm concrete slab with 375mm waffle pod
Finishes: Burnished concrete to living areas, carpet to bedrooms, ceramic tiles to wet areas

Ceiling 10mm plasterboard on timber framing with R5.0 batt insulation

Roof Metal sheet roofing on timber battens with R1.5 reflective foil laminate
1000mm eave overhang

Walls External: Lightweight cladding on battens, reflective foil membrane (vapour permeable if appropriate), timber frame, R2.5 batt insulation, 10mm plasterboard
Internal: 10mm plasterboard on timber framing with R2.5 batt insulation

Windows Double glazed, thermally broken aluminium frame

Ceiling fans 1400mm diameter fans. 1 in each bedroom, 1 in the dining area, 1 in the front living area.

Weather strips to all windows and sliding doors. Seals and weather-strips to hinged external doors. Sealed exhaust fans to bathroom, powder room and kitchen rangehood.

NatHERS star rating: 6 stars

Change windows to **double glazed, low emissivity glass, uPVC¹ frame** and improve the rating to achieve:

7 stars



¹ uPVC window frames have similar insulating properties to timber frames.

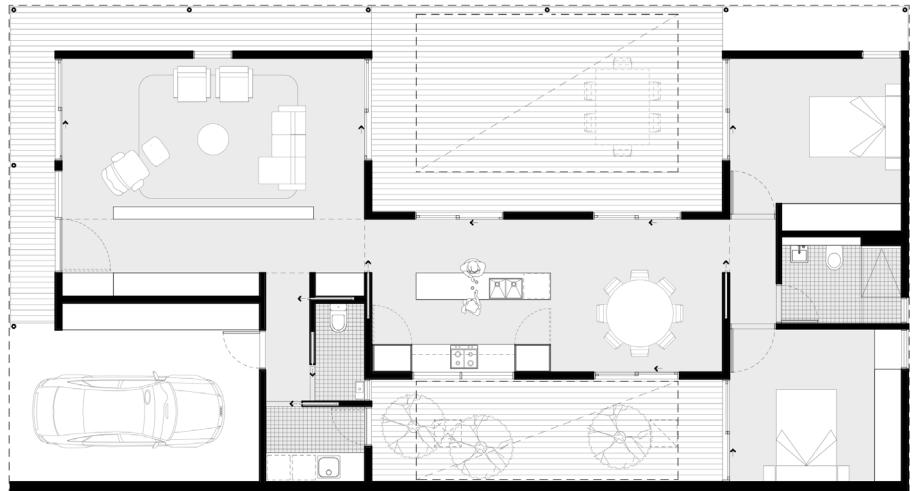
Case Study 2

Design For Place* Acacia house in Darwin


Project details:

2 bedroom, 2 bathroom home, located in Darwin.

123m² floor area (excluding carport).



Construction details:

Floor plan 

- Floor** 100mm concrete slab on ground
Finishes: Burnished concrete to living areas, ceramic tiles to bedrooms and wet areas
- Ceiling** 10mm plasterboard on timber framing with R5.0 batt insulation
- Roof** Metal sheet roofing on timber battens with R1.5 reflective foil laminate
1000mm eave overhang
- Walls** External: concrete blocks with stud wall, wall wrap, R2.0 batt insulation, 10mm plasterboard
Internal: 10mm plasterboard on timber framing with R2.5 batt insulation
- Windows** Single glazed, low emissivity glass, aluminium frame
- Ceiling fans** 1400mm diameter fans. 1 in each bedroom, 1 in the dining area, 1 in the front living area.
- Weather strips to all windows and sliding doors. Seals and weather-strips to hinged external doors. Sealed exhaust fans to bathroom, powder room and kitchen rangehood.

NatHERS star rating: 6 stars

Change windows to **double glazed, low emissivity glass, thermally broken aluminium frame** and improve the rating to achieve:

7 stars



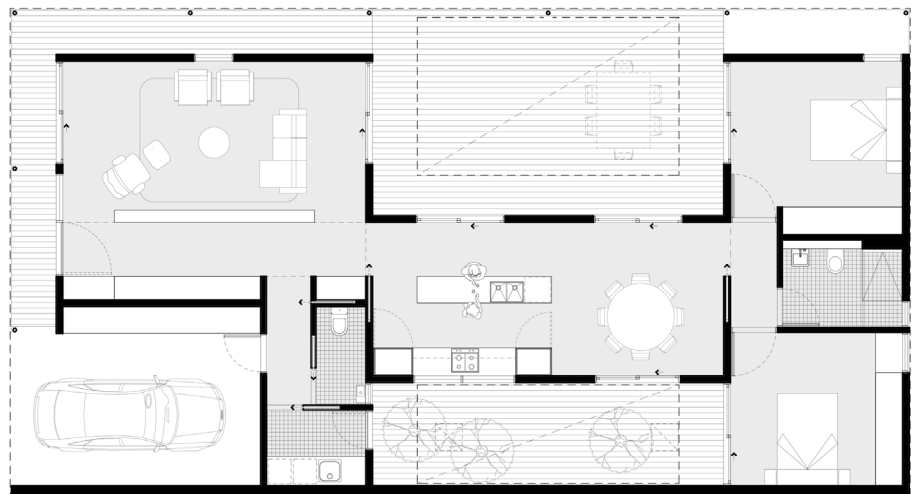
Case Study 3

Design For Place* Acacia house in Canberra

Project details:

2 bedroom, 2 bathroom home, located in Canberra.

123m² floor area (excluding carport).



Construction details:

Floor plan 

- Floor** 100mm concrete slab on ground with R1.8 under slab insulation
Finishes: Burnished concrete to living areas, carpet to bedrooms, ceramic tiles to wet areas
- Ceiling** 10mm plasterboard on timber framing with R5.0 batt insulation
- Roof** Metal sheet roofing on timber battens with R1.5 reflective foil laminate
600mm eave overhang
- Walls** External: Lightweight cladding on battens, reflective foil membrane (vapour permeable if appropriate), timber frame, R2.5 batt insulation, 10mm plasterboard
Internal: 10mm plasterboard on timber framing with R2.5 batt insulation
- Windows** Double glazed, uPVC¹ frame
- Ceiling fans** 1400mm diameter fans. 1 in each bedroom, 1 in the dining area, 1 in the front living area.
- Weather strips to all windows and sliding doors. Seals and weather-strips to hinged external doors. Sealed exhaust fans to bathroom, powder room and kitchen rangehood.

NatHERS star rating: 7 stars

Change windows to **double glazed, low emissivity glass, uPVC¹ frame** and improve the rating to achieve:

8 stars



¹ uPVC window frames have similar insulating properties to timber frames.

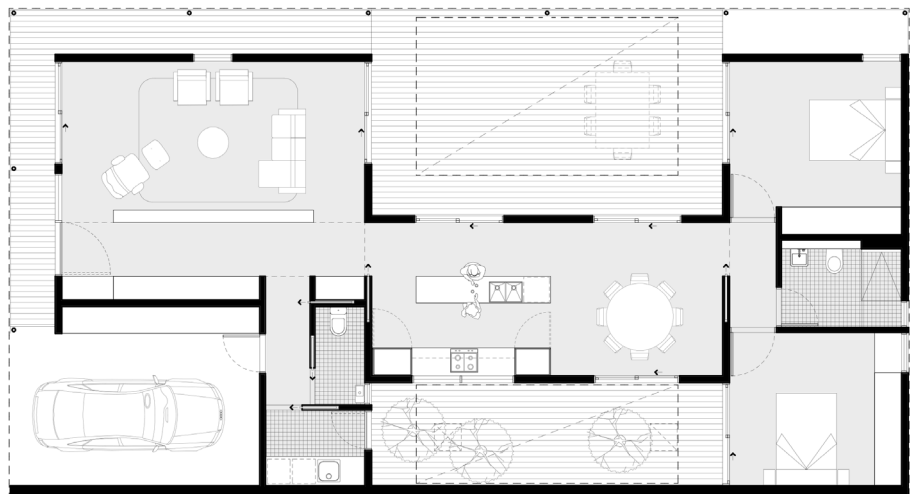
Case Study 4

Design For Place* Acacia house in Perth

Project details:

2 bedroom, 2 bathroom home, located in Perth.

123m² floor area (excluding carport).



Construction details:

Floor plan 

Floor 100mm concrete slab with 375mm waffle pod
Finishes: Burnished concrete to living areas, carpet to bedrooms, ceramic tiles to wet areas

Ceiling 10mm plasterboard on timber framing with R5.0 batt insulation

Roof Metal sheet roofing on timber battens with R1.5 reflective foil laminate
1000mm eave overhang

Walls External: Lightweight cladding on battens, reflective foil membrane (vapour permeable if appropriate), timber frame, R2.5 batt insulation, 10mm plasterboard
Internal: 10mm plasterboard on timber framing with R2.5 batt insulation

Windows Double glazed, thermally broken aluminium frame

Ceiling fans 1400mm diameter fans. 1 in each bedroom, 1 in the dining area, 1 in the front living area.

Weather strips to all windows and sliding doors. Seals and weather-strips to hinged external doors. Sealed exhaust fans to bathroom, powder room and kitchen rangehood.

NatHERS star rating: 7 stars

Change windows to **double glazed, low emissivity glass, uPVC¹ frame** and improve the rating to achieve:

8 stars



¹ uPVC window frames have similar insulating properties to timber frames.