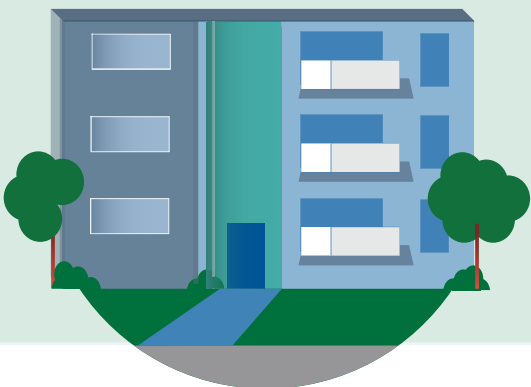




Information for assessors



Improving Whole of Home ratings and reducing energy use

The new NatHERS Whole of Home rating offers many additional benefits for those building their dream home or undertaking a major renovation.

For the first time, NatHERS is providing new information for households on what appliances have the biggest impact on their energy bills and carbon footprint.

You can use the predicted annual greenhouse gas emissions and annual energy use to demonstrate to your client if their home is 'net zero carbon' or 'net zero energy'.

An assessment not only demonstrates minimum requirements, but also opens discussions with clients about including more energy efficient appliances, or what size solar PV system should be installed.

Tips for a higher rating

Homes that exceed 7 stars are rewarded in their Whole of Home rating! And there are some easy tips to follow to help you achieve a higher Whole of Home rating including:

- 1 Selecting more energy efficient appliances.** Use the tools and certificate outcome to determine the best choices for the design.
- 2 Adding or increasing the amount of solar PV on the home.** Solar PV helps to offset the energy needed to heat and cool during daylight hours.
- 3 Adding a battery to the home.** A battery may help to increase the Whole of Home rating by reducing the home's energy imports during peak energy use periods.



Find out more
visit nathers.gov.au/assessors





Information for assessors

Benefits of NatHERS

Whole of Home assessments provide a streamlined, flexible and cost effective way to comply with the new NCC requirements, taking only an extra 10-15 minutes on top of a thermal rating.

You can also:

- 1 Use a wider range of appliances, energy generation and storage options (as compared to the NCC Deemed-to-Satisfy elemental provisions).
- 2 Demonstrate homes that go beyond minimum standards by showing home performance on a scale; from those meeting minimum requirements to those that are generating more energy than they use.
- 3 Trade-off between different technologies and appliance efficiencies. For example, you could demonstrate how more efficient appliances might reduce or remove the need to install solar PV at the home, while still meeting the minimum requirements under the NCC 2022.
- 4 Reward thermal performance ratings above the minimum by applying the reduced heating and cooling needs to the Whole of Home assessment. This means that exceeding 7 stars will provide a higher Whole of Home rating and require less efficient appliances or solar PV.



Find out more
visit nathers.gov.au/assessors

